



## DUS Gateway Release Notes – Release 5.0

Fannie Mae will implement DUS Gateway® Release 5.0 on May 19, 2018. The system will be offline beginning 8:00 a.m. ET on Saturday, May 19, with a maintenance window lasting until 8:00 a.m. ET on Monday, May 21.

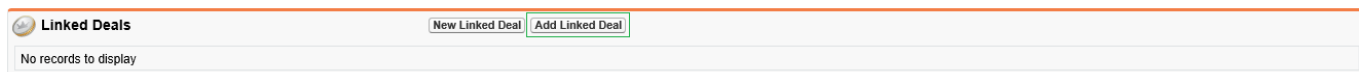
### Key release highlights impacting Lenders:

1. Add Standalone deals to existing Portfolio as Linked deals
2. Delete Standalone Deals in Pre-Registered Status
3. Delete draft Loan Option(s) anytime during the deal life cycle
4. Refinance related validations added on Deal Submission
5. Prepayment related validations added on Loan Options page

### Additional details on Release 5.0 new functionality:

#### 1. Add Standalone deals to existing Portfolio as Linked deals

On the Deal Detail page of a Portfolio, click “**Add Linked Deal**” in the Linked Deals section to add an existing Standalone deal to an existing Master deal.



#### 2. Delete Standalone Deals in Pre-Registered Status

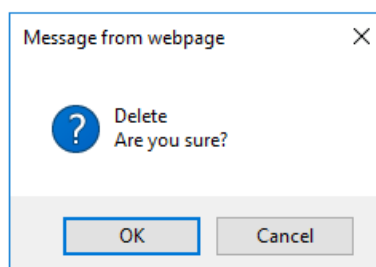
On the Deal Detail page of a Standalone deal in **Pre-Registered** status, click “**Delete**” to remove the deal from DUS Gateway.



#### 3. Delete draft Loan Option(s) anytime during the deal life cycle

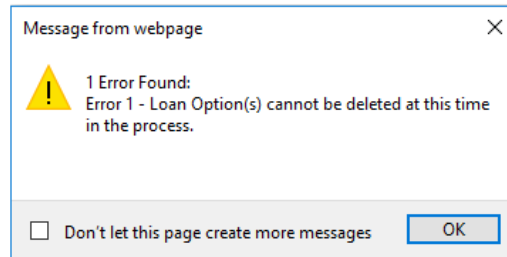
The Loan Options page will allow a user to delete draft Loan Option(s) anytime during the deal life cycle except when the Deal Status is “Committed” or “Delivered.”

3.1. The system will provide a warning message prior to deleting the draft Loan Option(s).



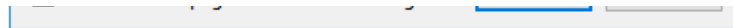


3.2. The system will provide an error message if the user tries to delete draft Loan Option(s) when the Deal Status is “Committed” or “Delivered.”

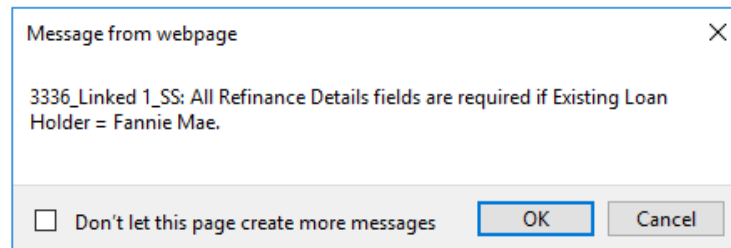


#### 4. Refinance related validations added on Deal Submission

4.1. A warning message is displayed when the user submits a Portfolio without populating the **Existing Loan Holder** when **Loan Purpose** is “Refinance.”

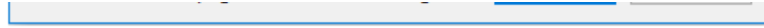


4.2. A warning message is displayed when the user submits a Portfolio without populating all the fields under the Refinance Details section when **Loan Purpose** is “Refinance” and **Existing Loan Holder** is “Fannie Mae.”



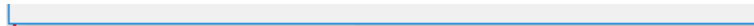


4.3. A warning message is displayed when the user populates any of the Refinance fields under the Refinance Details section when **Loan Purpose** is not “Refinance.”

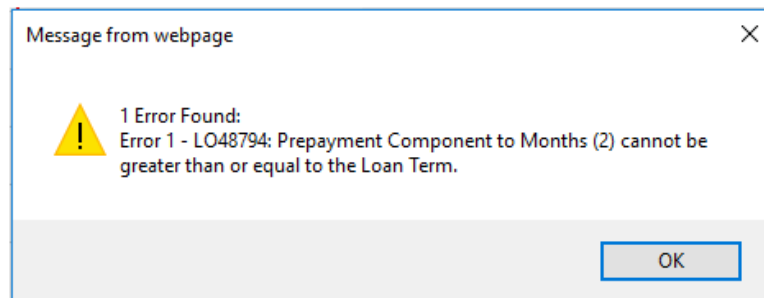


## 5. *Prepayment related validations added on Loan Options page*

5.1. An error message is displayed when **Prepayment Component to Months (1)** is greater than or equal to the **Loan Term** and **Prepayment Component (1)** is not Defeasance.

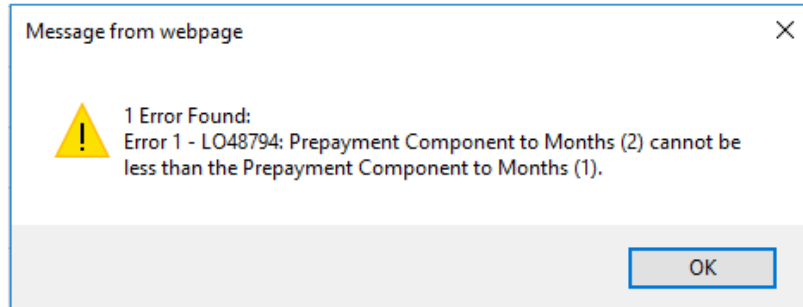


5.2. An error message is displayed when **Prepayment Component to Months (2)** is greater than or equal to the **Loan Term**.





5.3. An error message is displayed when **Prepayment Component to Months (2)** is less than the **Prepayment Component to Months (1)**.



Please contact your NAM or submit a support request via the "Cases" tab within DUS Gateway for questions.